

TELAS

FABRICS

TELAS Grupo 1 FABRICS Group 1



Composición: 100% Acrílico teñido en masa.
Ancho: 160cm
Acabado: hidrófugo con tratamiento antimanchas.
Solidez a la luz: 7/8
Garantía: 5 años.
Tolerancia: valores susceptibles de tolerancia de +/- 5%

Limpieza y mantenimiento

Eliminar la suciedad mediante cepillado o aspirado suave del tejido. Lavar a temperatura máxima de 30° y jabón neutro. No utilizar disolventes ni detergentes abrasivos. No utilizar secadora. Planchado máximo a 150°. No admite lavado en seco.

Composition: 100% solution dyed acrylic.

Width: 160 cm

Finish: water repellent with a stain resistant treatment.

Light fastness: 7/8

Warranty: 5 years.

Tolerance: values subject to +/-5% tolerance

Maintenance and cleaning

Remove dirt by softly brushing or vacuuming the fabric. Wash at 30° max. with a mild soap. Do not use solvents or abrasive detergents. Do not tumble dry. Iron up to 150° max. Do not dry clean.



Resistente al agua
Water resistant



Resistente a las manchas
Stain resistant



Resistente al moho
Mould resistant



Protección UV
UV protection



Resistente a los rayos UV
UV resistant



Fuerte y duradero
Durable and strong



Aislante
Non-conductive



Fácil de limpiar
Easy to clean

TELAS Grupo 2-3 FABRICS Group 2-3



Composición: 100% Acrílico teñido en masa.
Ancho: 137cm EN 1773
Acabado: repelente al agua y antimanchas.
Solidez a la luz: 8/8 (ISO 105 B02)
Solidez de colores a la intemperie: 4-5/5 (ISO 105 B04)
Garantía: 5 años.

Limpieza y mantenimiento

Textiles Sunbrella pueden lavarse a máquina a 40°. Dejar secar al aire. Las tapicerías de tela que no se puedan quitar para el lavado se pueden limpiar con un cepillo y agua jabonosa de cerdas suaves (agregar 50 ml de lejía por litro de agua en caso de manchas difíciles). Enjuague con agua limpia y dejar secar al aire.

Composition: 100% solution dyed acrylic.

Width: 137 cm EN 1773

Finish: water-repellent and stain-proof.

Light fastness: 8/8 (ISO 105 B02)

Weather condition colour fastness: 4-5/5 (ISO 105 B04)

Warranty: 5 years.

Maintenance and cleaning

Wash at 40°. Allow to air dry. Fabric covers that cannot be removed for washing can be cleaned with a soft-bristled brush and soapy water (add 50 ml of bleach per litre of water in case of stubborn stains). Rinse with clean water and allow to air dry.



Limpiables con lejía
Bleach cleanable



Transpirables
Breathable comfort



Resistentes al moho
Mold / mildew resistant



Resistentes a la suciedad
Water & stain resistant



Protegen del sol
Sun protection



UV / resistentes pérdida color
UV / fade resistant

BATYLINE Grupo 2-3 BATYLINE Group 2-3

BATYLINE

TEXYLOOP
A GLOMEX GROUP COMPANY

Serge Ferrari

Composición: Composite PVC – fibras sintéticas.
Ancho: 180cm
Garantía: 5 años.
Reciclabilidad: 100% por el sistema Texyloop.
Sistema de gestión de calidad: ISO 9001
Sistema de gestión medioambiental: ISO 14001

Limpieza y mantenimiento

Quitar el polvo al tejido con un aspirador o un cepillo suave no metálico. Lavar con un cepillo suave o una esponja utilizando agua jabonosa. Aclarar abundantemente con agua clara (chorro de agua). Dejar que se seque bien el tejido al aire libre en posición desplegada. Si el tejido puede desprenderse de su soporte, la limpieza puede realizarse a máquina a una temperatura no superior a 40°C.

Composition: Composite PVC-synthetic fibres.

Width: 180 cm

Warranty: 5 years.

Recyclability: 100% by Texyloop method.

Quality system: ISO 9001

Environmental system: ISO 14001

Maintenance and cleaning

Remove dust from the fabric with a vacuum cleaner or soft, non-metallic brush. Wash with a soft brush or a sponge, using soapy water. Rinse copiously (spray) with clean water. Allow the fabric to air dry completely, well spread out. If the textile can be removed from its base, it may be machine-washed at a temperature no higher than 40°C.



Resistente al desgarro
Tear resistant



Fácil cuidado
Easy care



Resistente a los rayos UV
UV resistant

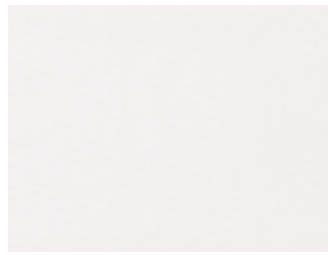


Resistente a la deformación
Deformation resistant



Resistente al moho
Mould resistant

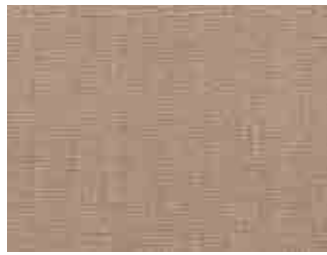




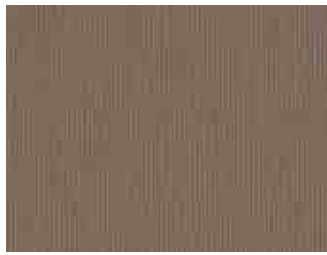
G1 22 [20000 C. Martindale]



G1 21 [20000 C. Martindale]



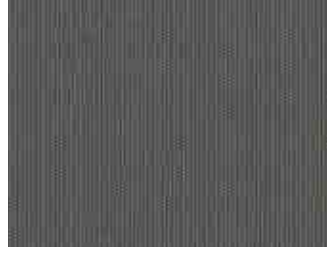
G1 1101 [20000 C. Martindale]



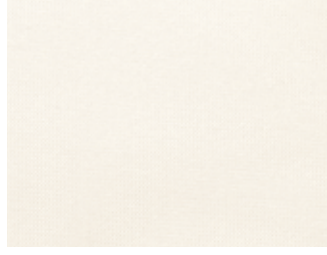
G1 1103 [20000 C. Martindale]



G1 1119 [20000 C. Martindale]



G1 1201 [20000 C. Martindale]



G2 1047 [25000 C. Martindale]



G2 1041 [25000 C. Martindale]



G2 1011 [25000 C. Martindale]



G2 1220 [35000 C. Martindale]



● G2 1221 [35000 C. Martindale]
Disponible sólo en 2020
Only available in 2020



G2 1069 [25000 C. Martindale]



G2 1070 [25000 C. Martindale]



G2 1072 [25000 C. Martindale]



● G2 1071 [25000 C. Martindale]
Disponible sólo en 2020
Only available in 2020



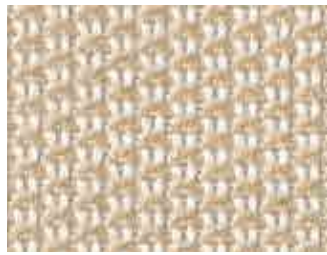
G2 1202 [25000 C. Martindale]



G3 1080 [80000 C. Martindale]



G3 1081 [80000 C. Martindale]



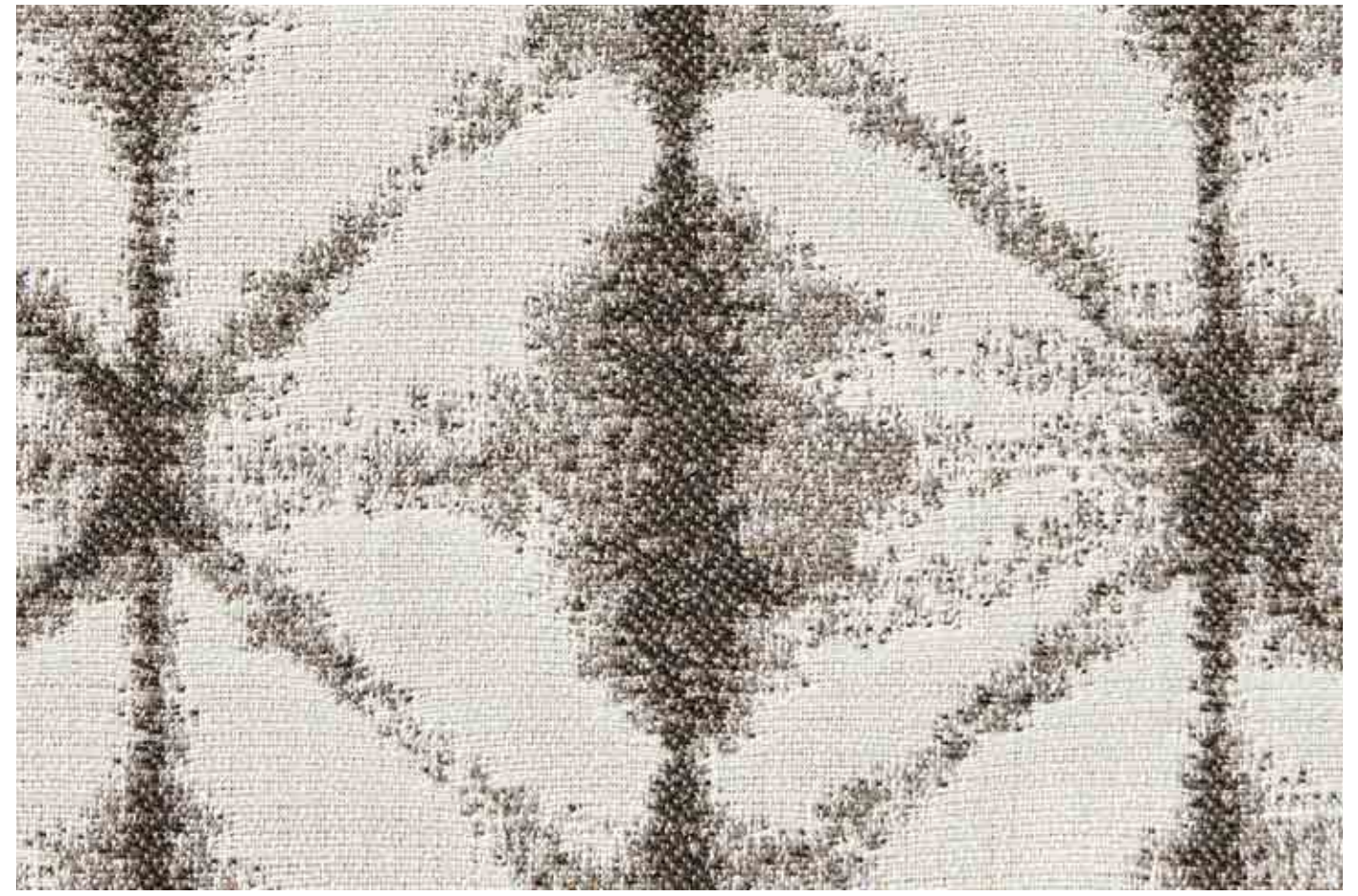
G3 1238 [80000 C. Martindale]



G3 1239 [80000 C. Martindale]



G3 1240 [80000 C. Martindale]



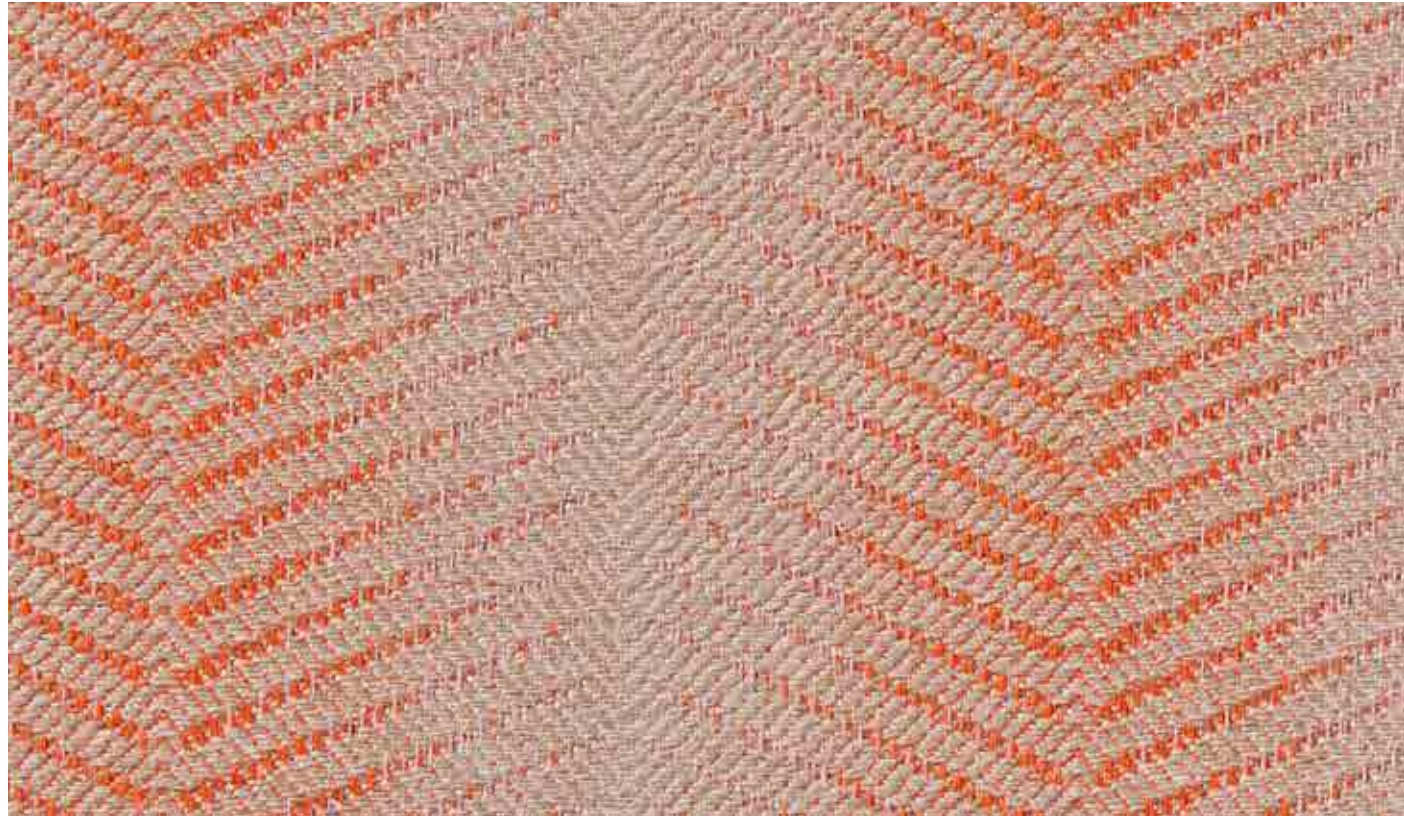
G3 1246 [22000 C. Martindale]



G3 1232 [50000 C. Martindale]



G3 1233 [50000 C. Martindale]



G2 1224 [80000 C. Martindale]



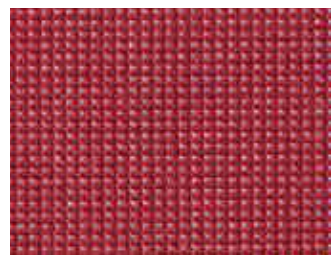
G3 1243 [80000 C. Martindale]
Disponible sólo en 2020
Only available in 2020



G2 1214 [25000 C. Martindale]



G2 1213 [25000 C. Martindale]



G2 1218 [15000 C. Martindale]
Disponible sólo en 2020
Only available in 2020



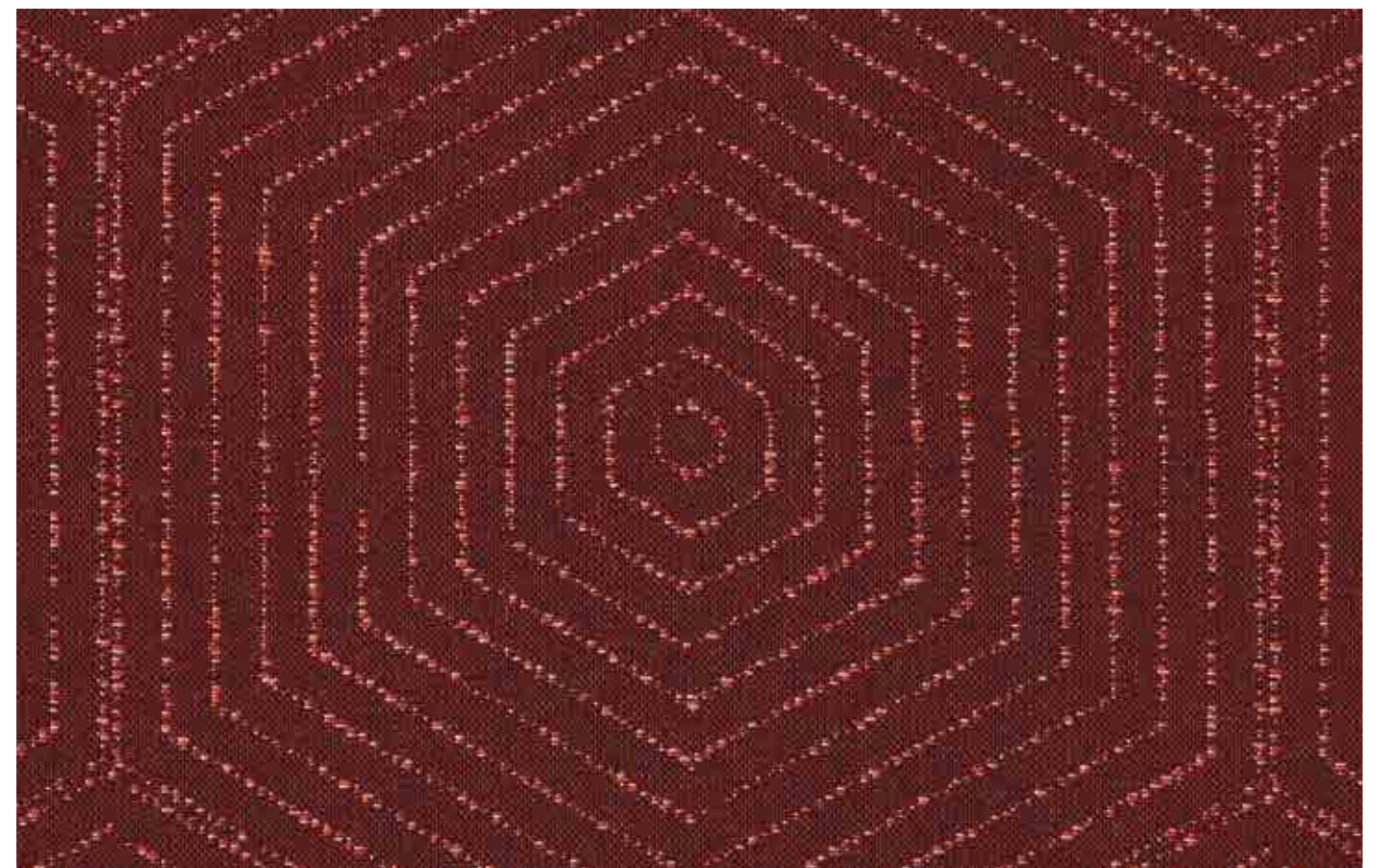
G2 1212 [25000 C. Martindale]



G2 1219 [25000 C. Martindale]
Disponible sólo en 2020
Only available in 2020



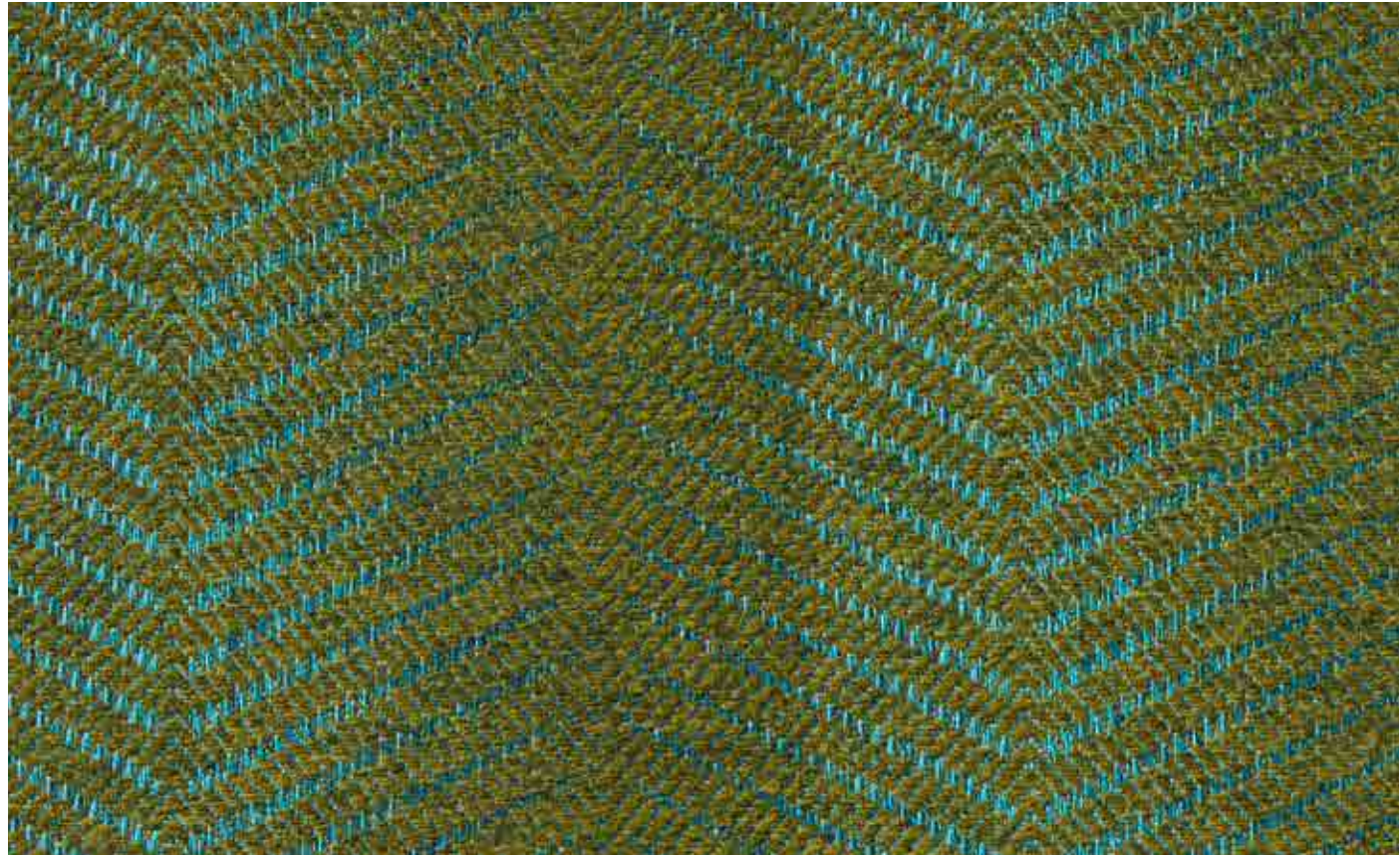
G3 1235 [50000 C. Wyzenbeek]



G3 1230 [100000 C. Wyzenbeek]



G2 1226 [80000 C. Wyzenbeek]



G2 1225 [80000 C. Wyzenbeek]



G3 1241 [80000 C. Martindale]
Disponible sólo en 2020
Only available in 2020



G2 1211 [25000 C. Martindale]
Disponible sólo en 2020
Only available in 2020



G2 1210 [25000 C. Martindale]
Disponible sólo en 2020
Only available in 2020



G2 1217 [15000 C. Martindale]
Disponible sólo en 2020
Only available in 2020



G3 1227 [46000 C. Martindale]



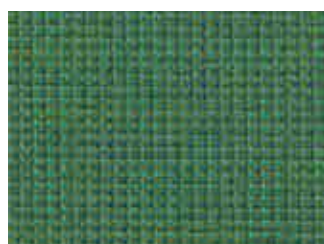
G3 1082 [80000 C. Martindale]
Disponible sólo en 2020
Only available in 2020



G2 1209 [25000 C. Martindale]



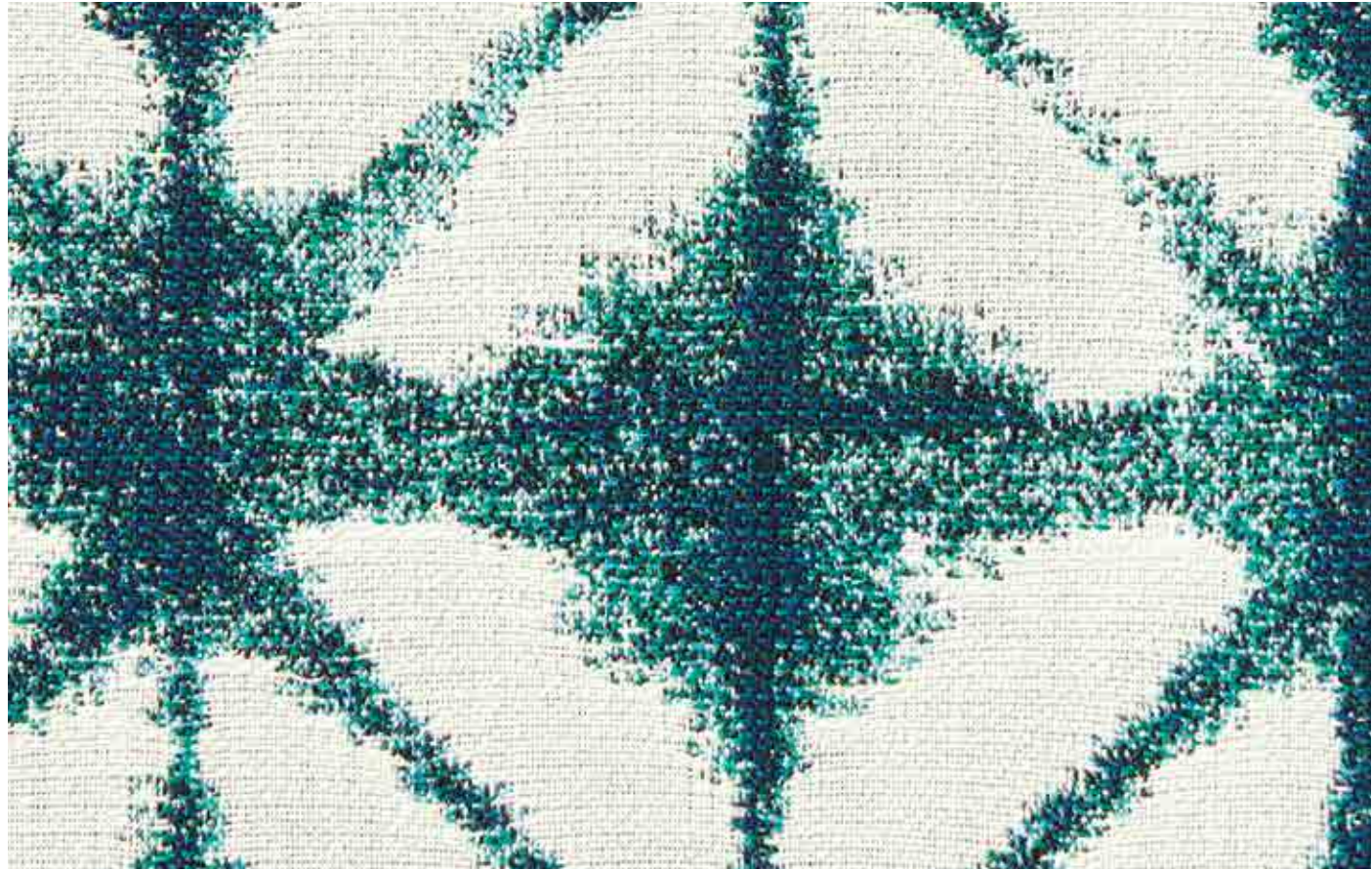
G2 1208 [25000 C. Martindale]
Disponible sólo en 2020
Only available in 2020



G2 1216 [15000 C. Martindale]
Disponible sólo en 2020
Only available in 2020



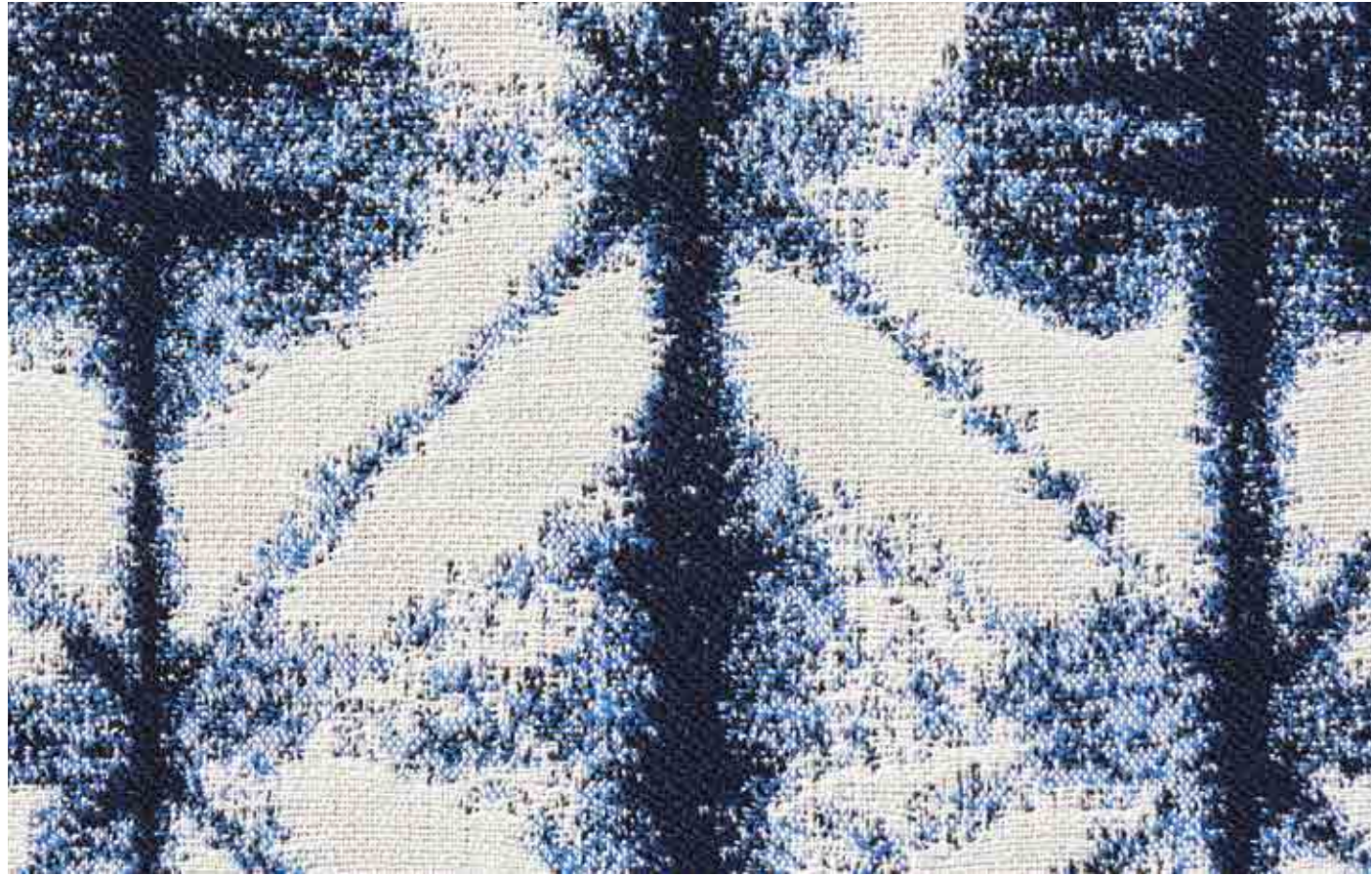
G3 1228 [46000 C. Martindale]



G3 1245 [22000 C. Wyzenbeek]



G3 1234 [50000 C. Wyzenbeek]



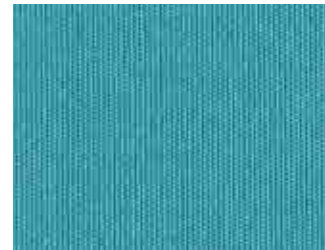
G3 1247 [22000 C. Wyzenbeek]



G3 1084 [80000 C. Martindale]
Disponible sólo en 2020
Only available in 2020



G2 1215 [15000 C. Martindale]
Disponible sólo en 2020
Only available in 2020



G2 1206 [25000 C. Martindale]



G2 1205 [25000 C. Martindale]



G3 1229 [46000 C. Martindale]



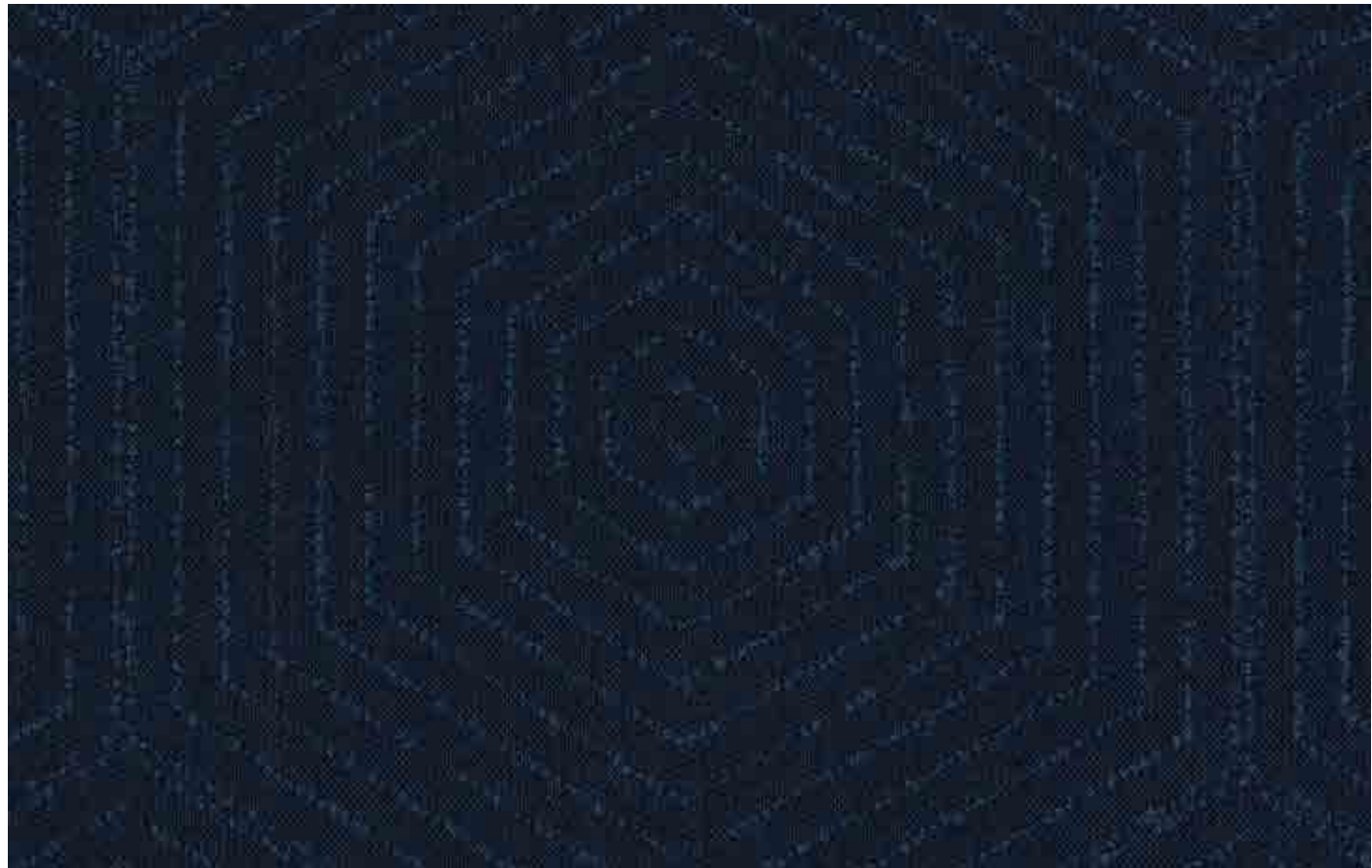
G2 1207 [25000 C. Martindale]



G2 1204 [25000 C. Martindale]

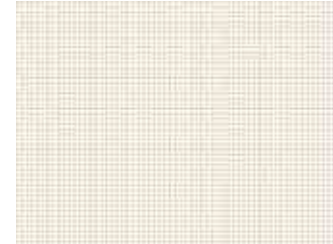


G2 1203 [25000 C. Martindale]
Disponible sólo en 2020
Only available in 2020



G3 1231 [100000 C. Wyzenbeek]

BATYLINE



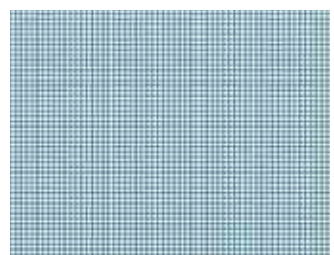
G2 35 [120000 C. Martindale]



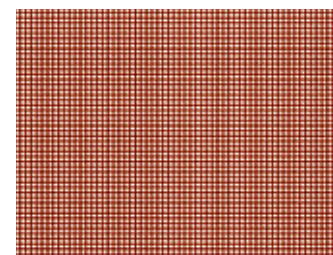
G2 37 [120000 C. Martindale]



G2 38 [120000 C. Martindale]



G2 39 [120000 C. Martindale]



G2 40 [120000 C. Martindale]



G2 57 [120000 C. Martindale]



G3 13 [120000 C. Martindale]



G3 09 [120000 C. Martindale]



G3 10 [120000 C. Martindale]



G3 11 [120000 C. Martindale]

Photography
Ángel Segura

Art Direction
Perez Ochando

Photography Art Direction
Perez Ochando & POINT

Layout & Texts
POINT

POINT
Partida Planet, s/n.
03727 Xaló (Alicante) Spain
T. +34 966 480 132
info@point1920.com
www.point1920.com